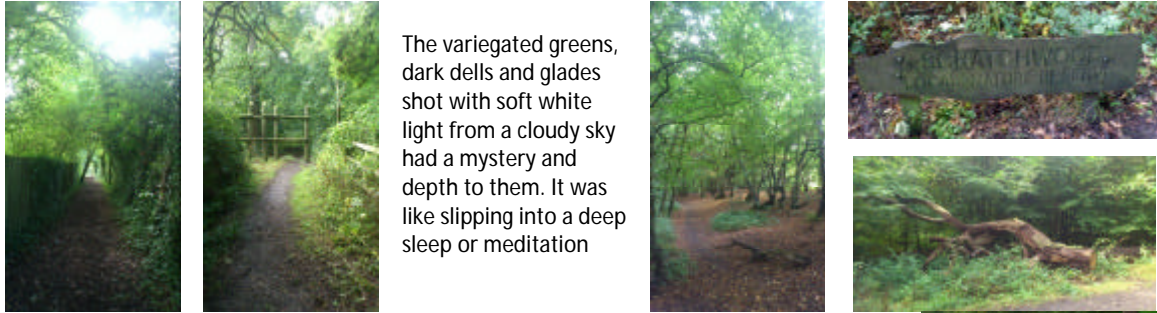


Walk the Loop for Children's Centres

Walk 12: Elstree and Borehamwood to Cockfosters



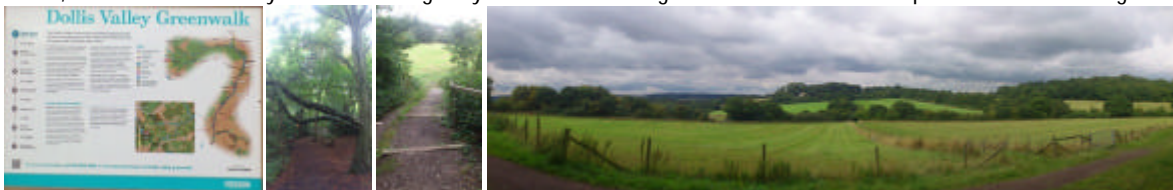
Enchanted woodland was an important feature of this walk as well as wide meadows and grasslands.



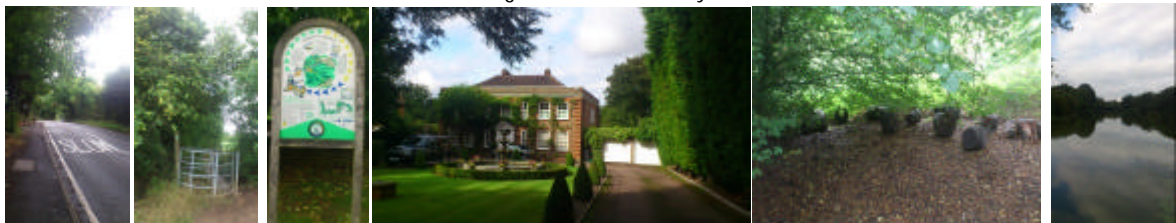
The variegated greens, dark dells and glades shot with soft white light from a cloudy sky had a mystery and depth to them. It was like slipping into a deep sleep or meditation



Then, it was time to be fully awake as a long busy road had to be negotiated to connect to the posted nature trails again.



They led through diverse landscapes, some wide and sweeping, others more enclosed and intimate including the beautiful village of Monken Hadley.



The walk was long and quite an intense experience. It was deeply grounding and nourishing.



Walk the Loop
for Children's Centres

olivia.lowe@gaininsight.co.uk

www.gaininsight.co.uk

07983 996 373

All rights reserved by gain.insight



gain.insight

enabling better futures