

# Walk the Loop for Children's Centres

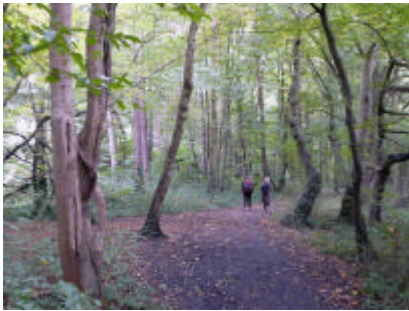
## Walk 11: Moor Park to Elstree and Borehamwood



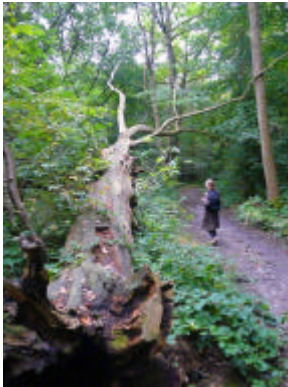
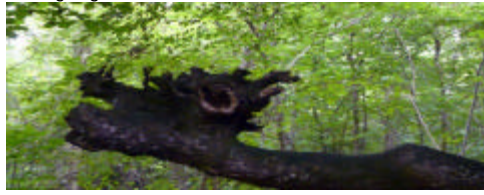
We made sure not to miss the very first turn inside Moor Park station ...



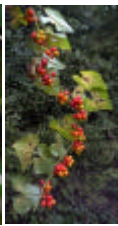
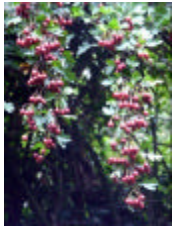
... looking forward to always finding the reliable LOOP pointers where it mattered.



Ghoulish encounters with tree spirits in seemingly unattended forest, if it hadn't been for the visible hand of wood wardens keeping the ivy from strangling the trees.



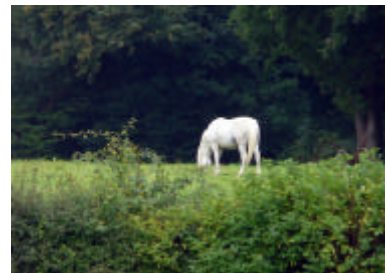




Early autumn delights: better not to taste them when not sure of what's edible or merely decorative or perhaps even poisonous.



Open landscape followed often enriched by sweet chestnut. Grazing horses became a common sight.







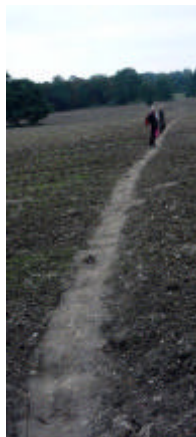
We walked along stretches of harsh public foot path where only the beauty of nature's design of weeds helped to distract us. Then we entered another attractive area by the ancient earthworks of Grim's Dyke.



Nearby was Gilbert's stately home which seemed almost dwarfed by the giant redwoods at its border.



There were times when we really needed to slow down and check the guide book so as not to miss the almost hidden entrances to sections of the walk ....



... as... when trying to find our way through a golf course tantalisingly near our final destination of Elstree and Borehamwood Station.



Walk the Loop

**Walk the Loop**  
for Children's Centres

[olivia.lowe@gaininsight.co.uk](mailto:olivia.lowe@gaininsight.co.uk)  
[www.gaininsight.co.uk](http://www.gaininsight.co.uk)  
07983 996 373



**gain.insight**  
enabling better futures

All rights reserved by gain.insight