

Walk the Loop for Children's Centres

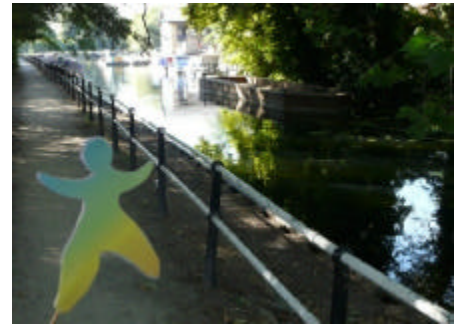
Walk 2: Enfield Lock via Chingford to Chigwell,
including a children's nature trail by the Epping Forest Visitor Centre at Queen Elizabeth Hunting Lodge



We started out at the station...



reached Enfield Lock...



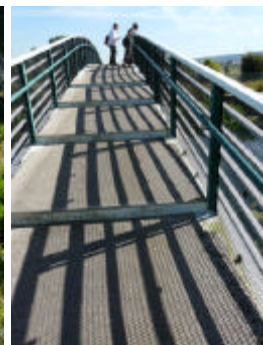
followed the canal ...



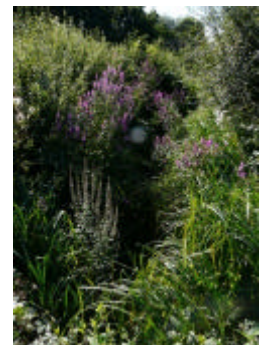
along pathways...



across bridges that cast...



patterns of shadow.



Wild flowers...



and a parade show of birds made us smile.



Then we came to wide fields and skies scudded with aeroplane trails. We walked through wooded meadows, climbing



up to Queen Elizabeth Hunting Lodge



and Epping Forest Centre courtyard



that greeted families and children



with a nature trail, nets, treasure boxes, bug hunting tools and magnifying glasses. These invited them...



to enjoy the local area, following arrows, looking...



observing....



exploring...

discovering...



matching words with pictures...



catching insects...



walking with intent...

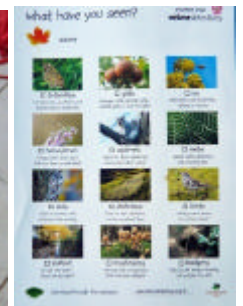
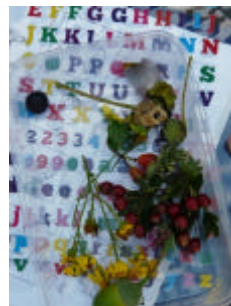
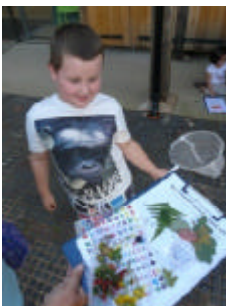


and curiosity...



Each child collected leaves, acorns, grasses and other gems of nature. Some even caught spiders (and let them go...)



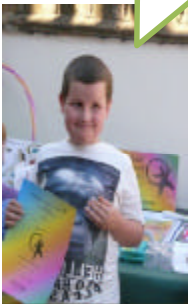


They showed each other what they had found...

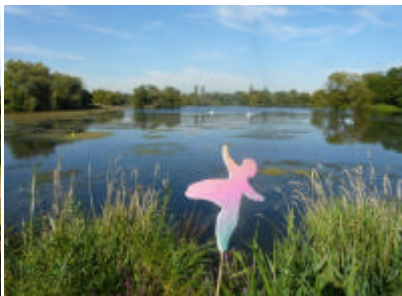
and decorated their treasure boxes to take home...

*Had a super time!
I loved it!*

*Had a lovely, fun time and found
lots of cool things!*



At the end of the trail, certificates were awarded to every explorer.



Then we said our good-byes and a few of us continued our walk, up to Buckhurst Hill, through the picturesque Roding Valley, to our destination – Chigwell Station. We were tired by the end, after taking a short-cut here, a long detour there and getting lost on more than one occasion, but it did not matter. The day had been agreeable and eventful in kindly sunshine.



Walk the Loop

Walk the Loop
for Children's Centres

olivia.lowe@gaininsight.co.uk
www.gaininsight.co.uk
07983 996 373



gain.insight
enabling better futures

All rights reserved by **gain.insight**